



ACUFLOW™

Flow Meters

A revolution in reliable flow measurement



DN40 - DN200 DIAMETERS



8.62 bar



DIGITAL DISPLAY AVAILABLE



EASY & INTUITIVE INSTALLATION



>98.1% AVERAGE ACCURACY

H2flow Controls has over 20 years of specialist competence integrating flow management solutions for a variety of different industries. Our people and products have developed a reputation as some of the best in the business. Trust us to help improve your operational efficiency and reduce your operating costs.

...WHERE SIMPLICITY AND ACCURACY COEXIST TO PRODUCE A REVOLUTION IN FLOW MEASUREMENT.

Ingenious in concept and flawless in operation, AcuFlow™ is revolutionizing the way flow is measured.

With unrivaled average accuracy, greater installation flexibility, and more independently certified models than any other brand, it's easy to see why AcuFlow™ is a flow meter you can put your trust in.

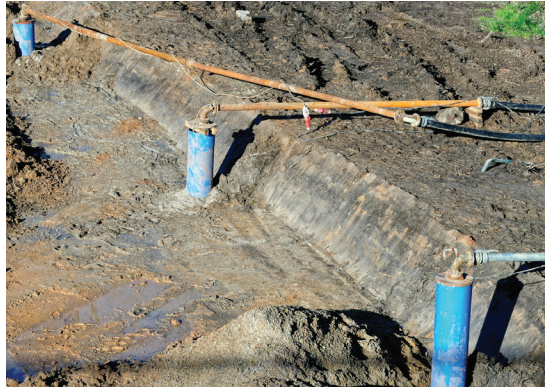


ACUFLOW™ MODEL	AF-DN40	AF-DN50/65	AF-DN80
DESCRIPTION	AcuFlow for DN40 pipe with m ³ /h scale and check valve function	AcuFlow for DN50/65 pipe with m ³ /h scale and check valve function	AcuFlow for DN80 pipe with m ³ /h scale and Tee
AVERAGE ACCURACY	98.7%	99.2%	98.9%
ACCURACY INDEPENDENTLY VERIFIED BY NSF	YES	YES	YES
PIPE TYPE	SCH40	SCH40	SCH80
CALIBRATION REQUIRED?	NO	NO	NO
WARRANTY	3-Years	3-Years	3-Years
DESIGN LIFE	15-Years	15-Years	15-Years
SPRING REPLACEMENT	7-Years	7-Years	7-Years
MANUFACTURED IN USA	YES	YES	YES

⁽¹⁾ AF-DN150 and AF-DN200 models coming soon.

⁽²⁾ AF-DN200 is supplied as standard with AcuFlow Digital; available as an option for all other AcuFlow models.

⁽³⁾ Accuracy of AcuFlow model AF-DN200 with Digital display.



The accuracy you want. The reliability you need.



Unrivaled accuracy across the entire model range (>98.1%).



Robust construction and uncompromising quality.



Installation flexibility; no requirement for 15x straight pipe.



AF-DN100



AF-DN150⁽¹⁾



AF-DN200⁽¹⁾ (with Digital)⁽²⁾

AF-DN100	AF-DN150 ⁽¹⁾	AF-DN200 ⁽¹⁾ (with Digital) ⁽²⁾
AcuFlow for DN100 pipe with m ³ /h scale and Tee	AcuFlow for DN150 pipe with m ³ /h scale and saddle-clamp	AcuFlow for DN200 pipe with m ³ /h scale and saddle-clamp
99.6%	98.1%	98.9% ⁽³⁾
YES	YES	YES
SCH80	SCH80	SCH80
NO	NO	NO
3-Years	3-Years	3-Years
15-Years	15-Years	15-Years
7-Years	7-Years	7-Years
YES	YES	YES

Scan to learn more about the AcuFlow™ flow meter



FEATURES & BENEFITS

- Installation flexibility; installs horizontally, vertically, or upside-down
- Models for DN40 and DN50/65 can be installed right next to other plumbing fittings such as elbows with no effect on accuracy
- $\pm 1.9\%$ average accuracy across the entire model range
- Models for DN40 to DN100 compatible with AcuFlow Digital; models for DN150 and DN200 coming soon.
- Independently verified by NSF
- Doubles as a check valve (DN40 and DN50/65 models)
- Clear, easy-to-read scale in m^3/h
- Installs quickly and easily with no calibration required
- Manufactured in the USA
- 15-year design life, 3-year warranty

A wide range of AcuFlow® models are available for DN40 through DN200 pipe diameters with m^3/h scales. Digital models are also available for the full range.

OPTIMIZE YOUR PROCESS WITH DIGITAL FUNCTIONALITY

Even with the ability to install AcuFlow in tight spaces and with almost zero straight pipe requirements, it can sometimes be difficult to install the device in a location that makes it easy to read. AcuFlow Digital solves this problem by allowing you to install a Digital readout in a user-accessible location.

Advanced features and ease-of-use

By adding AcuFlow Digital to the already unrivaled accuracy and flexibility of AcuFlow flow meters, users will experience even greater functionality, ease-of-use, and

precision. Unique features such as the ability to set flow rate alarms and interface with external equipment further enhances an already robust and capable analog flow meter.



KEY FEATURES OF ACUFLOW™



SIZING

Available for DN40 - DN200 pipe diameters



DIGITAL

Digital upgrade compatible with all models



APPLICATION

Measurement of clean and potable water



NSF - 50
CCS-12485

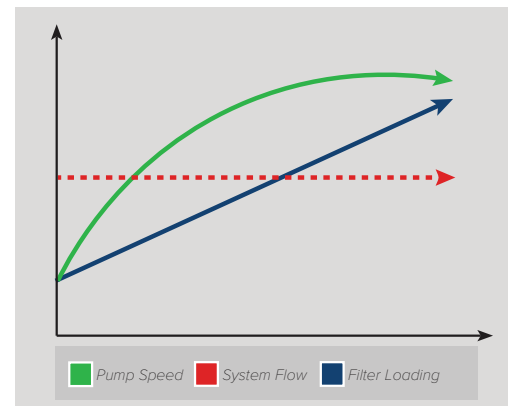
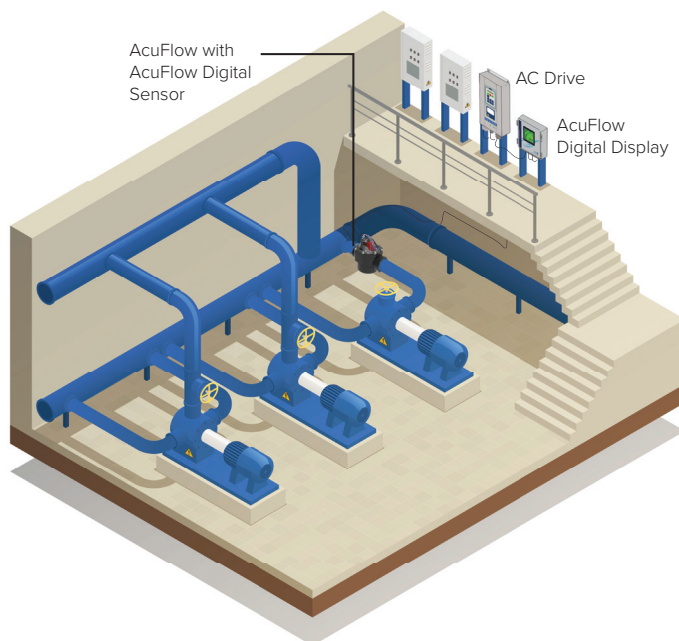
ACCURACY

Independently verified average accuracy of $\geq 98.1\%$

ACHIEVE CONSTANT FLOW WITH ACUFLOW™ DIGITAL

One of the key benefits of using a Variable Frequency Drive, is the ability to achieve a constant flow rate even as process conditions change.

As process conditions change, the Variable Frequency Drive will slowly ramp up the pump's speed to maintain a constant flow rate. With its precise flow measurement and its 4-20 mA output, AcuFlow Digital allows the user to take advantage of this significant benefit.



Above: The above graph shows that as the filter loads up, the pump speed is increased in order to maintain constant flow.

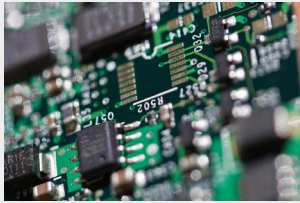
TECHNICAL SPECIFICATIONS

Diameter Range	DN40 to DN200
Pressure Rating	8.62 bar
Flow Range (m ³ /h)	2-20 (DN40); 2-25 (DN50/65); 16-55 (DN80); 28-102 (DN100); 68-227 (DN150); 113-410 (DN200)
Average Accuracy	± 1.9% (across model range)

MATERIAL DATA (MSDS)

COMPONENT	AF-DN40	AF-DN50/65	AF-DN80	AF-DN100	AF-DN150	AF-DN200	MATERIAL
Lid	•	•	•	•	•	•	Clear Polycarbonate
Spring	•	•	•	•	•	•	Hastelloy c-276
O-Ring	•	•	•	•	•	•	Viton
Lid Screws	•	•	•	•	•	•	316 Stainless Steel
Indicator for Pivot Pin	•	•	•	•	•	•	Hastelloy c-276
Scale Label	•	•	•	•	•	•	Armalex
Product Label	•	•	•	•	•	•	Armalex
NSF Label	•	•	•	•	•	•	Armalex
Valve Body	•	•					CPVC
Check Valve Flapper	•	•					PPEPS
Flapper Seal	•	•					Viton
Indicator (AF-DN40 and AF-DN50/65)	•	•					ABS
Indicator (AF-DN80 to AF-DN200)			•	•	•	•	ABS
Magnet	•	•	•	•	•	•	N52 Neodymium
Carriage			•	•	•	•	ABS
Flapper Pulley			•	•	•	•	ABS
Spring Pulley			•	•	•	•	ABS
Flapper to Indicator Link			•	•	•	•	ABS
Connecting Wire			•	•	•	•	316 Stainless Steel
Dowel Pin - Link to Indicator			•	•	•	•	316 Stainless Steel
Dowel Pin - Flapper to Carriage			•	•	•	•	316 Stainless Steel
Barrel Bolt - Link to Flapper Binding			•	•	•	•	316 Stainless Steel
Tee, Schedule 80, 3" x 3"			•				CPVC
Tee, Schedule 80, 4" x 4"				•			CPVC
Reducing Bushing 3"			•		•		PVC
Reducing Bushing 4"				•		•	PVC
Saddle Clamp DN150					•		CPVC
Saddle Clamp DN200						•	CPVC
Saddle Clamp Nut & Bolt Set					•	•	316 Stainless Steel

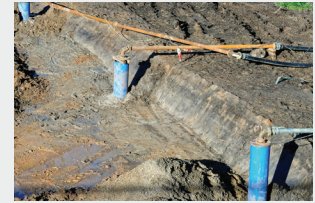
Typical applications for AcuFlow™ include...



PCB & Semiconductor Production



Chicken Farming



Groundwater & Reclamation



Aquariums



Commercial Laundry



Medical & Pharmaceutical



Food & Beverage



Fracking & Petroleum Production



RO & Ultra Pure Water

While the above examples provide some insight into typical industries and applications for AcuFlow and AcuFlow Digital, they can be introduced into any environment or application where the measurement of clean, potable, or gray water is required.

For application guidance, contact H2flow Controls or an authorized H2flow sales representative.

Flow	HEAD LOSS (bar)					
	AF-DN40	AF-DN50/65	AF-DN80	AF-DN100	AF-DN150	AF-DN200
Low	0.04	0.05	0.02	0.02	0.01	0.01
Mid	0.08	0.08	0.06	0.04	0.02	0.01
High	0.14	0.14	0.09	0.05	0.03	0.02

Progress through Innovation™

Our innovative solutions are developed with a focus on controlling, protecting and monitoring machines and processes that are driven by electric motors.

Contact your authorized H2flow Controls solutions provider to find out how our products can reduce your operating costs and increase your productivity.

H2flow Controls, Europe

Tel: (+34) 609 31 52 82

info@h2floweurope.com

www.h2floweurope.com



©2021 H2flow Controls, Inc. and H2flow Controls, Europe All rights reserved. All H2flow trademarks are owned by H2flow Controls, Inc. Any use of the H2flow Controls, Inc., AcuFlow or AcuFlow Digital names, H2flow logo, AcuFlow or AcuFlow Digital product image is strictly prohibited without the expressed written consent of H2flow Controls, Inc. and its officials.

Because H2flow continues to make changes to its products and services, H2flow reserves the right to change specifications and product features without notice. Please contact H2flow or visit www.h2flow.net for the most up-to-date versions of our product literature. H2flow is an equal opportunity employer.